



carmanah®

carmanah
SABIK

MODEL

M550

SOLAR LED MARINE LANTERN

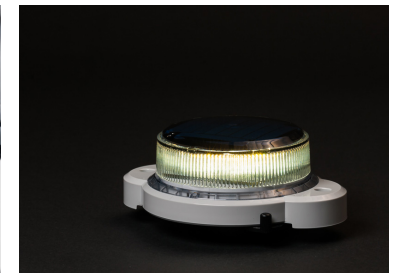
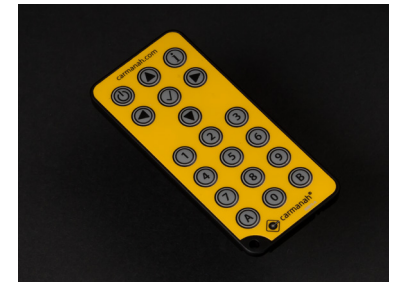
15 TIMES BRIGHTER, THREE TIMES THE RANGE, HALF THE SIZE

Leveraging custom optics, high-efficiency solar panels, and premium materials, this miniature solar LED marine lantern weighs less than one pound while still providing up to three times the range of its popular M502 predecessor. Now also with replaceable, recyclable batteries, this lantern offers excellent value and reliable operation for over five years. Ideal for marine aids-to-navigation (ATON), private aids-to-navigation (PATON), marina lighting, dock lighting, port lighting and more.

- Installs in minutes; automatic “out of box” activation
- Up to 26 cd (IALA peak, white)
- Up to 3 Nautical Miles visible range at T=0.74
- Vertical divergence 8° (FWHM)
- Up to 40 user-adjustable flash patterns with ability to direct enter effective intensity. Automatic adjustment for Schmidt Clausen
- Operates on three high-temperature-rated NiMH AA batteries
- Next generation, energy-saving Automatic Light Control; five-day data trending regulates intensities for optimal performance throughout the calendar year and longer battery life
- Premium grade, UV resistant polycarbonate body and lens material
- Waterproof design; IP 68 immersion
- Ventilated battery compartment
- Product life expectancy 15 years; 3 year warranty

With thousands of installations worldwide, Carmanah/Sabik solar LED lights operate year-round and are trusted by:

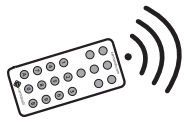
- | | |
|--|---|
| • Australian Maritime Systems | • PDVSA, Venezuela |
| • Brazilian Naval Commission | • NOAA – National Data Buoy Centre |
| • Canadian Coast Guard | • Panama Canal |
| • CETMEF, France | • Suez Canal, Egypt |
| • Port of Kandla, India | • Trinity House Light House Service, UK |
| • Maritime and Port Authority of Singapore | • United States Coast Guard |
| • SERBA, Uruguay | • Vancouver Port Authority |
| • Petrobras, Brazil | |



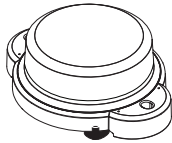
Carmanah/Sabik is backed by a worldwide network of distributors.

REPRESENTED BY:

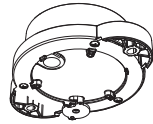
Sensor Systems (NZ) Ltd



OPTIONAL
INFRARED
PROGRAMMER



TOP VIEW: SWITCHED,
FLANGE MOUNT



BOTTOM VIEW: SWITCHED,
FLANGE MOUNT

MODEL

M550

SOLAR LED MARINE LANTERN

SPECIFICATIONS

Optical	26 cd peak intensity (as per IALA rating); see table
	High Flux Surface Mount LED
	IALA compliant chromaticities; Red, Green, White, Yellow, Blue
	Proprietary optical design
Energy Collection	36 flash patterns
	Best-in-class high-efficiency solar cells embedded in polyurethane. 0.6 W panel
Battery	Three high-temperature NIMH AA batteries rated for -40 to 185 °F (-40 to 85 °C)
	Designed for 5 year battery life; Replaceable and recyclable
Energy Management System (EMS)	Intelligent, microprocessor EMS
Automatic Light Control 2.0 (ALC 2.0)	When enabled, ALC adjusts output intensity in response to unusually low amounts of sunlight to ensure continued operation
Programming	Programmable with optional infrared programmer
Construction	Premium grade UV resistant, polycarbonate body and lens
	Waterproof battery compartment with GORE® vent
Temperature	External colour indicator matches LED colour
	-22 to 122 °F (-30 to 50 °C) operating -40 to 176 °F (-40 to 80 °C) storage
Weight	0.37 kg (0.8 lbs)
Mounting	Flange or pole-mount options. Refer to dimensional diagram for details
Wind Loading	140 knots (72 m/s)
Ice Loading	0.03 psi (22 kg/m ²)
Shock & Vibration	MIL-STD-202G (for Shock and Vibration)
Ingress	IP 68 immersion, 24 hrs at 1 m (3 ft)
	MIL-STD-202G immersion & damp heat cycling
	MIL-STD-810G rain & salt fog
Compliance	USCG PATON 33CFR66. 33CFR67 Class C Pending
	RoHS; WEEE
	IEC 60945, FCC

ORDER KEY

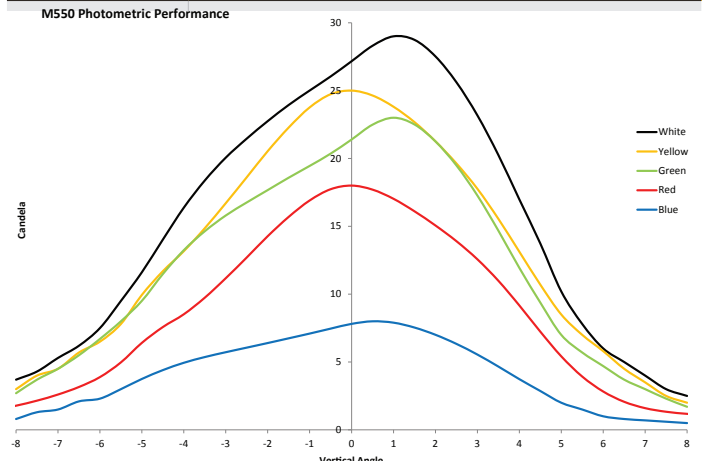
MODEL	OUTPUT ▼	MOUNT ▼	OTHER ▼
M550	RED GREEN WHITE YELLOW BLUE	FLANGE POLE-MOUNT*	SWITCH NO SWITCH

* Allow additional lead time for pole-mount option. Contact your sales representative for details.

Originally designed and built under contract with the U.S. Coast Guard, Carmanah Marine lanterns were the first solar-powered lanterns using light emitting diodes (LEDs) to enter the U.S. Navigational Aid System.

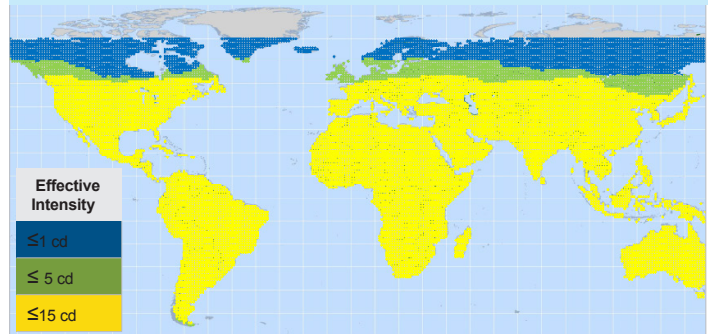
Today, thousands of Carmanah Marine lanterns are in use by Coast Guards, Navies, and Ports Authorities around the world.

PEAK INTENSITY (IALA)



M550 RED: TYPICAL PERFORMANCE

Flash Code 064: 12.5% duty cycle, 6 days autonomy



DIMENSIONS

