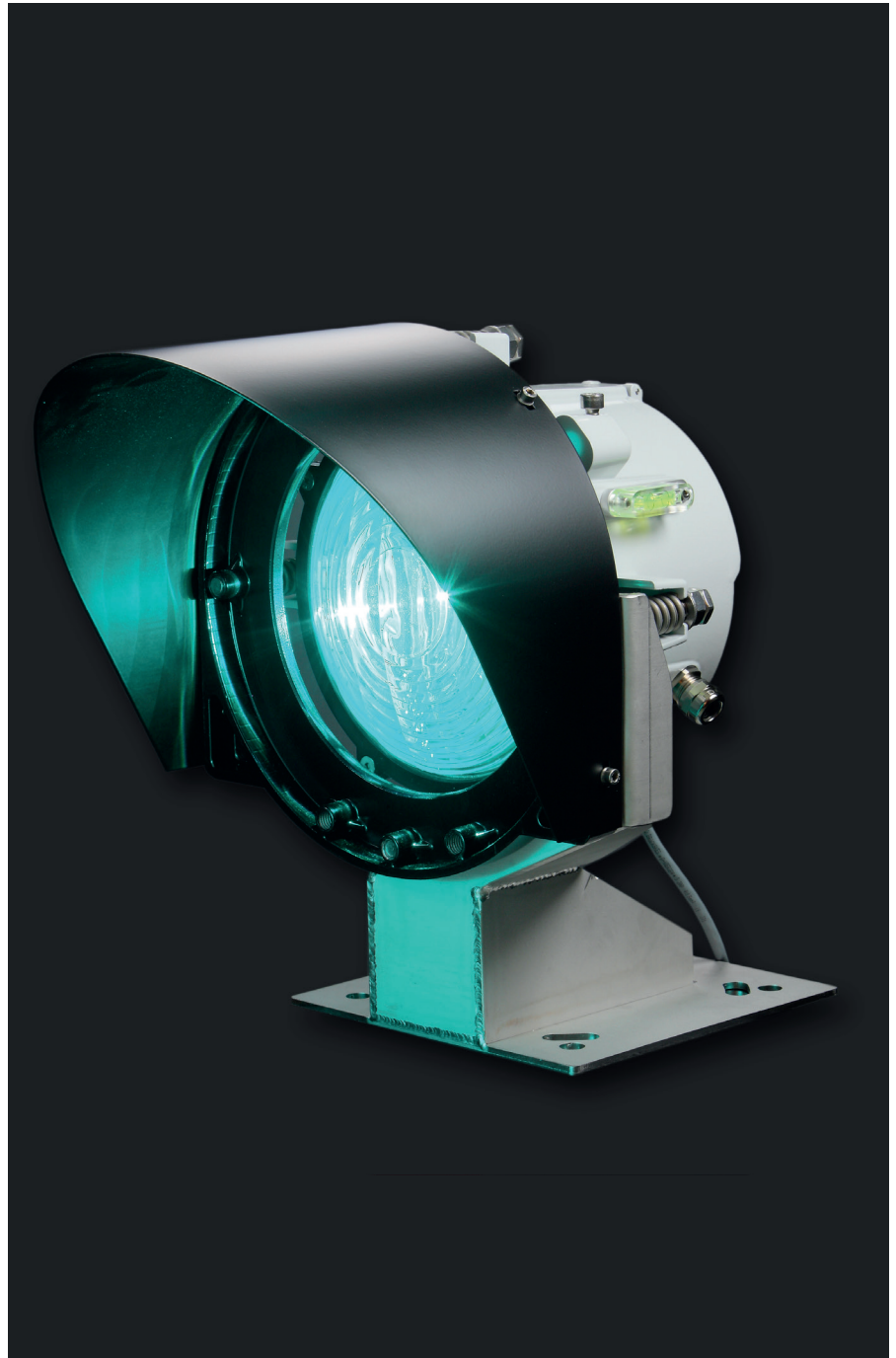


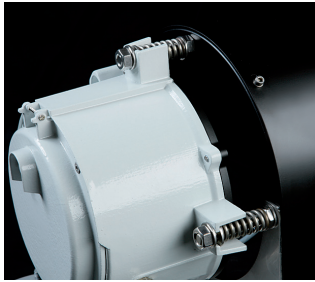
## LO 200M

### Medium/High Intensity LED Range Light

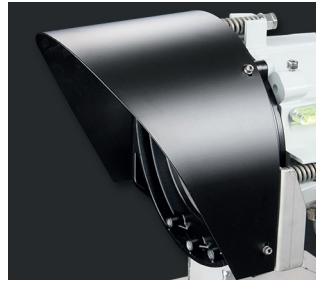
The LO 200M signal is designed for applications requiring medium and long range directional light, such as range lights and port entry signals.

- **High intensity precision range light**
- **Equipped with a high intensity power LED and especially designed optics**
- **Robust aluminium IP 66 housing**
- **Visual range up to 14NM (Tc = 0,74)**
- **Standard IALA colours Red, Green, White and Yellow**
- **Extremely low power consumption, suitable for solar and battery operation**
- **Vertical divergence 8° @ 50% of top intensity**
- **Integrated flasher with 16 A solar panel charger**
- **Adjustable intensity and range**
- **Programmable with Sabik standard IR programming devices**
- **Optionally integrated GPS synchronization**
- **Optionally integrated GSM remote monitoring**
- **Equipped with Bluetooth programming**

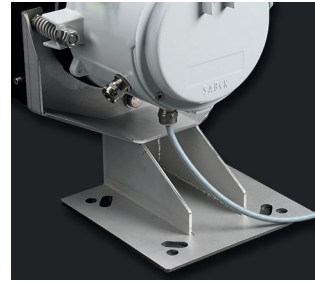




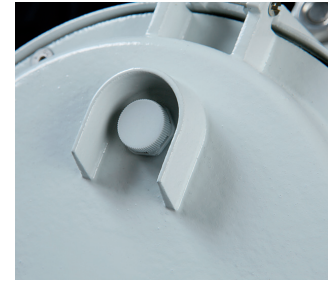
**Aluminium housing**  
The lantern enclosure is made from marine grade aluminium.



**Sun shield**  
Protects lens from dust and bird droppings. Improves contrast in daytime use.



**Installation**  
The lantern can easily be installed on any flat surface with four M10 size bolts.



**PTFE breathing**  
Vent for pressure release in the back of the lantern.



**Optics**  
Optics suitable for high intensity LED.



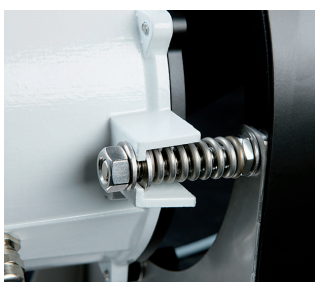
**Sabik Easy Programmer**  
User friendly and compact wireless two-way programmer.



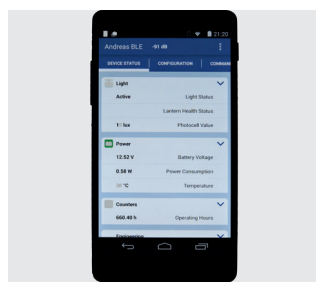
**Precision alignment**  
A gun sight can be utilized for precision alignment to the center line of the range.



**Level indicator**  
The integrated level indicator makes horizontal levelling easy.

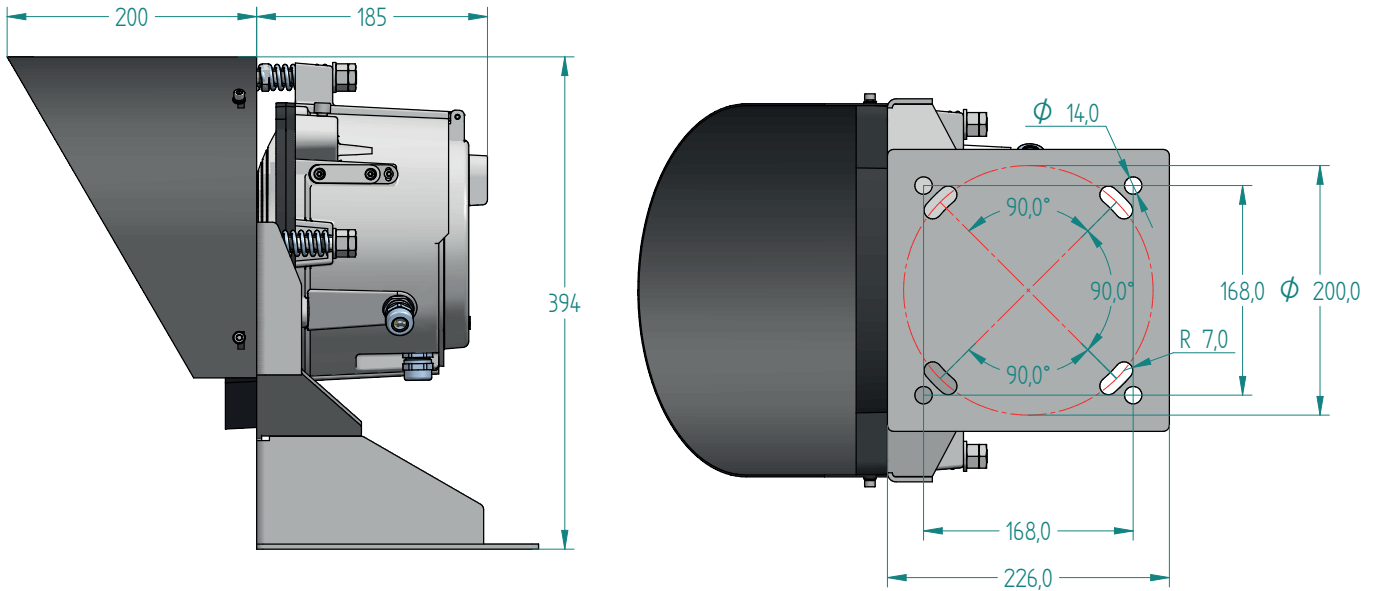


**Light beam adjustment**  
The direction of the light beam can be adjusted with 3 bolts. The 3 axis adjustment system enables both vertical and horizontal alignment.



**Bluetooth® Control**  
Lantern can be programmed and controlled up to 50 meters distance with standard android and iOS mobile phones.

## Technical Specification LO 200M



### Optical performance

#### Maximum fixed intensity

At full power	<b>7000 cd</b>	<b>7000cd</b>	<b>7000cd</b>	<b>13000cd</b>
---------------	----------------	---------------	---------------	----------------

### Main Technical Specification

<b>Lens visual/Mechanical diameter</b>	203 mm (8")
<b>Lens material</b>	UV stabilized Polycarbonate
<b>Light source</b>	Light Emitting Diodes (LEDs)
<b>Lens horizontal divergence</b>	6° @ 50 % (± 1°) of peak intensity
<b>Unit lifetime</b>	Up to 10 years
<b>Weight</b>	8 kg
<b>Temperature range</b>	-40°...+60°C
<b>Supply Voltage</b>	9 – 32 VDC
<b>Power consumption</b>	4W at full intensity
<b>Degree of protection</b>	IP 66

## Order Overview LO 200M

### Option matrix

<b>OPT 4: GPS sync</b>	Integrated GPS sync excluding GPS antenna
<b>OPT7: : External GPS</b>	External GPS antenna
<b>OPT 9: LightGuard GSM + GPS</b>	Integrated GSM based monitoring including GSM/GPS antennas
<b>OPT 10: LightGuard GSM</b>	Integrated GSM based monitoring including GSM antenna
<b>OPT 11: Control card</b>	Control card for secondary battery
<b>OPT 12: Aux card with I/O</b>	Aux card including I/O ports
<b>OPT 13: Aux card with RS485 and I/O</b>	Aux card including RS 485 and I/O port
<b>Shock &amp; Tilt Sensor</b>	Integrated 3-axis G sensor for tilt and shock sensing

### Product codes

Product	Colour
LO 200MW	white
LO 200MR	red
LO 200MG	green
LO 200MY	yellow

### Product code example: LO 200MR.4

- **LO 200MR** is Sabik code for LO 200M in red
- **4** is a selection of option 4