



# OL370d

DUAL MEDIUM INTENSITY OBSTRUCTION  
LIGHTING SYSTEM

The OL370d is a dual FAA L-864/L-865 medium intensity LED lighting system ideal for FAA E-type towers between 200' and 700' AGL. The system complies with CAR 621 2nd edition for medium intensity CL-864/CL-865 flashing lights and ICAO 7th edition standards for medium intensity type A/type B obstacle lights.

The OL370d uses a single cable for all communications, and beacon and marker power. Interleaved LEDs and by-pass circuitry provide the light with a longer lifespan. The system is housed in a single enclosure with a low voltage environment, removing the need for an interlock switch—alarms can remain active, even while the door is open. Firmware upgrades are quick and easy, requiring no controller modifications.



## STANDARD FEATURES

- Industry-leading 25kA surge immunity
- Minimized ground scatter via patented Fresnel optics
- LTE modem data connection for greater dependability
- Durable photodiode in metal housing with shielded cable
- No replaceable fuses required thanks to input power breaker switch
- Outdoor Wi-Fi antenna for status notifications and diagnostics
- ADLS interface
- Configurable to meet AC 70/7460-IL
- Dry contact monitoring
- **5-year warranty**

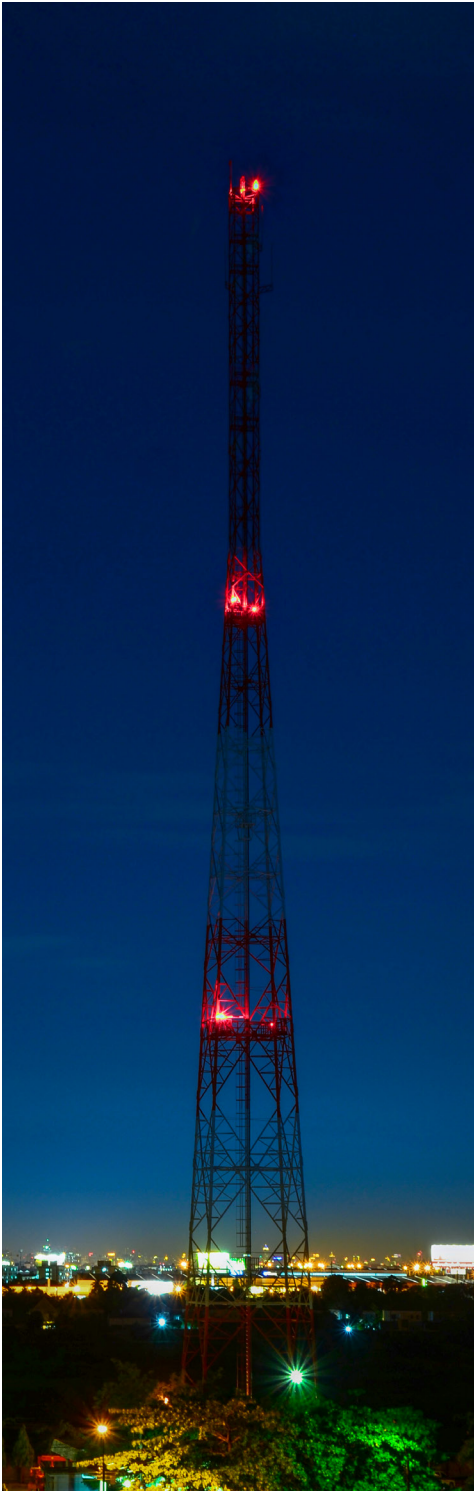
## OPTIONAL FEATURES

- Infrared marker LEDs
- SMART card
- GPS synchronization
- Remote Firmware Upgrades
- TECK90 Support
- Solar engine power source






REPRESENTED IN YOUR REGION BY:

# OL370d

DUAL MEDIUM INTENSITY OBSTRUCTION LIGHTING SYSTEM



## SPECIFICATIONS

Input Voltage	100-240 VAC at 50/60 Hz ±24 VDC (optional) ±48 VDC (optional)
Frequency	50-60 Hz
Marker Power Consumption	2.1 watts per marker (not included in system consumption)
Marker Dimensions	9" x 2.75" x 2.13" (228.6 x 69.9 x 54.1 mm)
Marker Weight	1.6 lbs (0.7 kg)
FH Dimensions	15.75" dia. x 7.31"
FH Weight	26.3 lbs (11.92 kg)
FH Aerodynamic Wind Area	99.125 in <sup>2</sup>
Controller Dimensions	23" x 17.13" x 6.44"
Controller Weight	44 lbs (20 kg)
Protection Rating	IP65, NEMA 4X
Certifications	    

		POWER CONSUMPTION (WITH IR)	FLASH RATE (PER MIN)	FLASH INTENSITY
<b>L-864</b> <b>L-865</b>	Day (white)	80 W (70 W)	40 flashes	20,000 ±25% ECD
	Night (red)	40 W (40 W)	20/30/40 flashes	2,000 ±25% ECD
	Night (white)	40 W (40 W)	40 flashes	2,000 ±25% ECD
<b>L-866</b> <b>L-885</b>	Day (white)	110 W (100 W)	60 flashes	20,000 ±25% ECD
	Night (red)	50 W (50 W)	60 flashes	2,000 ±25% ECD
	Night (white)	50 W (50 W)	60 flashes	2,000 ±25% ECD

\* Only 30 fpm flash rate is applicable for FAA certified applications filed under AC 70/7460-1L, and requires the use of L-810(F) depending on the height of the structure.

All Carmanah products are manufactured in facilities that are certified to ISO quality standards.  
**Specifications subject to local environmental conditions. Specifications may be subject to change.**  
 Carmanah is a Canadian public corporation - TSX:CMH  
 US and International patents apply. "Carmanah" and Carmanah logo are trademarks of Carmanah Technologies Corp.

© 2018, Carmanah Technologies Corp.  
 Document:SPEC\_OBS\_OL370d\_RevA