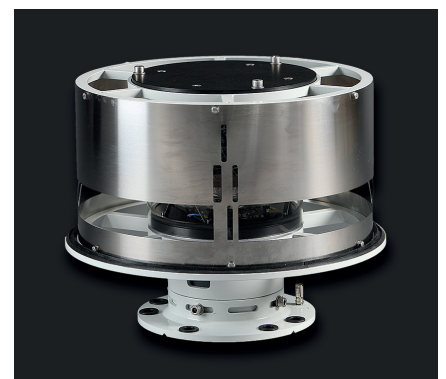
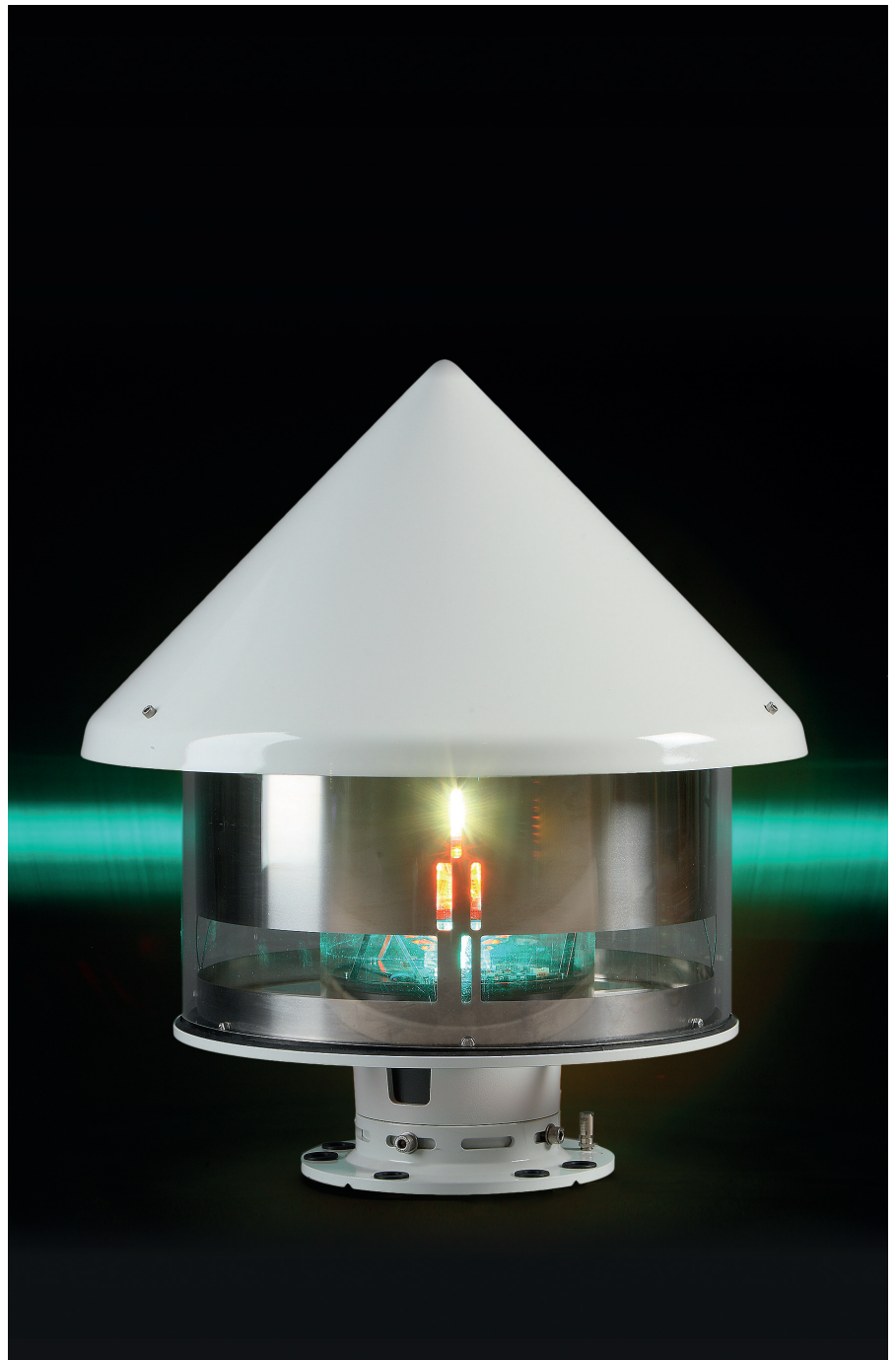


ODSL 200

Omni-directional LED sector light

ODSL 200 omni-directional sector light is an innovative, compact new sector light with accurate sector borders. This light is equipped with a replaceable LED optical unit. The range of the light, depending on colour and flash character, is between 6 and 10 NM ($T_c = 0,74$).

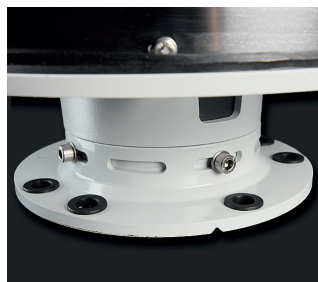
- Sectors are fully verified at Sabik's photometric range prior to delivery
- Field installation is easy thanks to a rotation mechanism in the base
- Precision alignment, at site, can be done with a gun sight (has to be ordered separately)
- After installation sector alignments remain unchanged even if the LED optical unit is replaced
- Light can be delivered with an external weather cover
- The standard sector light is available as a 3 or 6 layer model
- Small area of uncertainty between the sectors, typically less than $0,5^\circ$
- Integrated flasher with daylight switch and a 16 ampere solar panel charger
- Programmable with Sabik standard IR programming devices
- This light can be equipped with remote monitoring, synchronization and optical feedback
- Patented omni-directional LED sector light technology





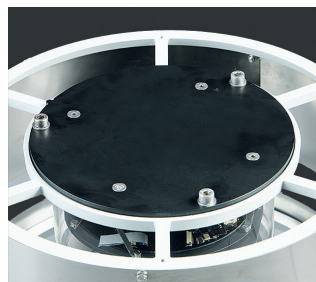
Optics

Optics designed for high intensity LEDs.



Adjustment

Rotation mechanism in basement.



Replaceable LED unit

LED optical unit is separated from the sector plate.



IR port and photocell

Combined infrared communication port and photocell is located on the base of the lantern.



Installation

The bottom plate supports installation on structures using 3 x M12 bolts or 4 x M12 bolts on a 200mm diameter.



Protection

Weather cover as option. Protects the lantern in outdoor installations.



High protection degree

The PTFE breathing vent for pressure release in the bottom of the LED optical unit.



Sabik Easy Programmer

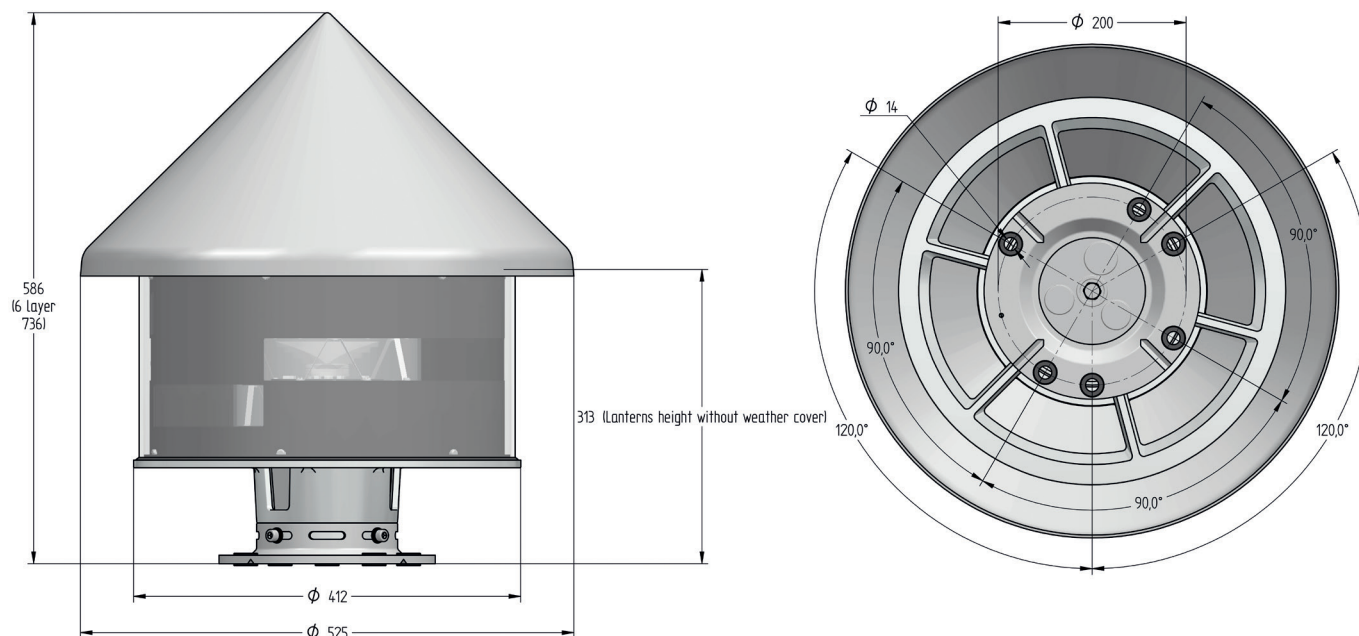
User friendly and compact wireless two-way programmer.



PDA Programmer

Wireless two-way communication using a Windows based PDA with infrared port. Flash code, range and photocell switch level etc. can be set. The Programmer can also retrieve the event log.

Technical Specification ODSL 200



Optical performance

Maximum fixed intensity per tier and colour

Max power 3,5 W	250 cd	250 cd	600 cd
-----------------	--------	--------	--------

When using weather cover reduce 10 % intensity.

Main Technical Specification

Lens visual/Mechanical diameter	200 mm
Lens material	UV stabilized Acrylic
Light source	High Power Light Emitting Diodes
Vertical divergence	2°@50% of peak intensity (FWHM)
Unit lifetime	Up to 10 years
Weight lantern	3-tier 10,5 kg, 6-tier 13,4 kg
Weight including weather cover	3-tier 14 kg, 6-tier 17,4 kg
Temperature range	-40° – +60°C
Supply Voltage	10 – 32 VDC
Solar panel charger	16 ampere PWM charger
Power consumption	3,5 watts/tier
Degree of protection	IP 67

Order Overview ODSL 200

Option matrix

OPT 4: GPS sync	Integrated GPS sync with external GPS antenna
OPT 7: External GPS	External GPS antenna for OPT4 and OPT9
OPT 9: LightGuard GSM + GPS	Integrated GSM based monitoring with external antennas
OPT 10: LightGuard GSM	Integrated GSM based monitoring with external GSM antenna

Product codes

LED ODSL 200

ODSL 200-3, 3 layer lantern

ODSL 200-6, 6 layer lantern

LED ODSL 200 WEATHER COVER

ODSL 200-3WC, 3 layer weather cover

ODSL 200-6WC, 6 layer weather cover

Gun sight for exact alignment

821030