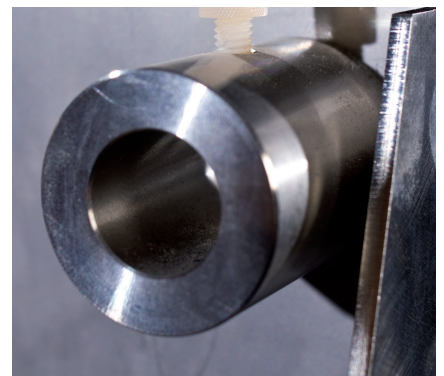


## LS 100

### LED Range Light

The LS 100 LED signal is designed for applications requiring short and medium range directional light, such as range lights and port traffic signals.

- Small and compact lantern
- Intensity adjustable in three steps from 25 % to 100 %
- Fully waterproof housing with PTFE vent for breathing
- Visual range from 2 to 10 NM (TC = 0,74)
- Standard IALA colours Red, Green, White and Yellow
- Low power consumption, ideal for solar system
- Flasher with day light switch can be integrated in the signal or installed externally in battery cabin
- Integrated solar panel regulator with LED Flasher
- Configuration and field maintenance with Programmer Mk2 or laptop computer
- Optional external GPS synchronization
- Optional external GSM Remote monitoring

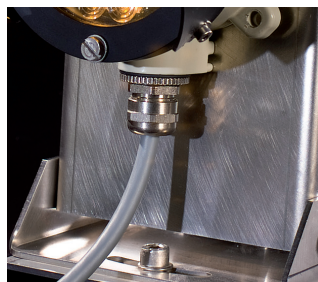






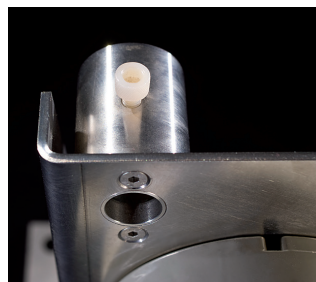
#### Sun shield

Protects lens from dust and bird droppings, and improves contrast in daytime.



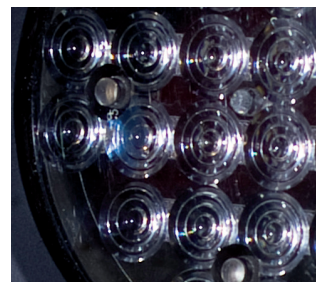
#### Mounting pedestal

The optional adjustable pedestal in AISI 316 stainless steel enables an easier alignment of the pencil beam with assistance of a precision gun sight.



#### Installation

The mounting pedestal has an integrated holder for an eye sight tool.



#### Polycarbonate lens

The optical lens consists of 24 pcs miniature Fresnel elements creating a high efficiency precision beam.



#### Programmer MK2

Configuration and retrieval of operating data with portable Programmer. Flash code and photocell switch level etc. can be set. No need to open lantern on normal service call.

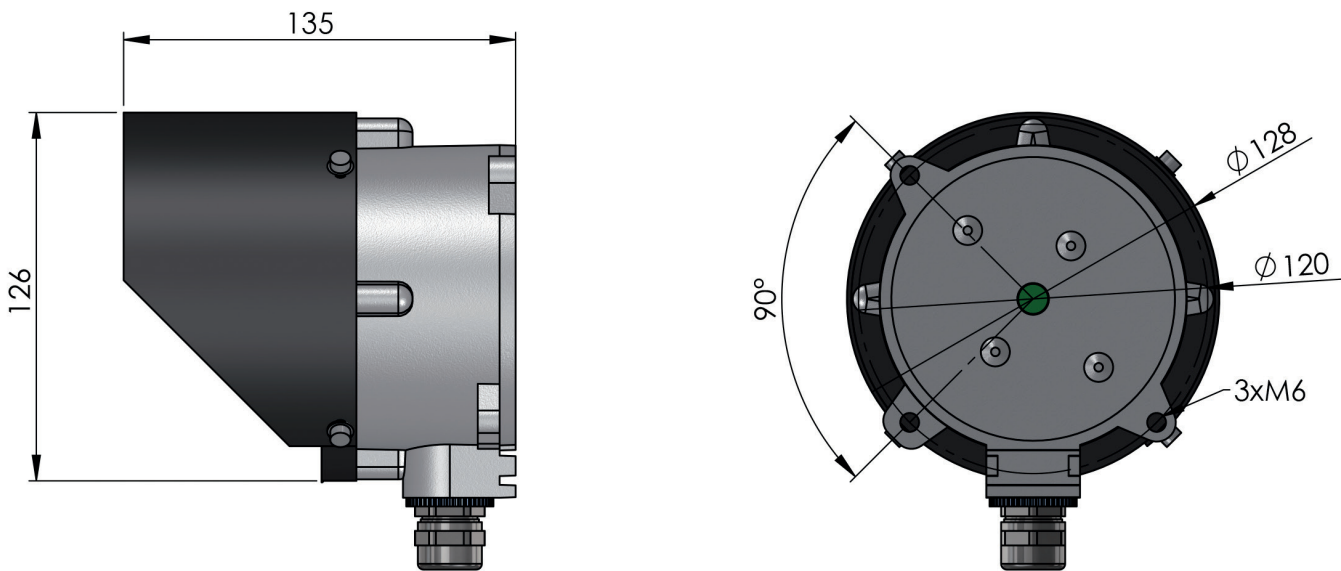


#### Sabik LHC Controller

When remote monitoring or more functionality is needed, like flash character, intensity setting etc. Sabik Lighthouse Controller can be used together with the light.



Technical Specification LS 100



Optical performance

Maximum fixed intensity				
At full power 4 W	3.000 cd	3.000 cd	5.000 cd	4.000 cd

Main Technical Specification

Lens visual/Mechanical diameter	100 mm
Lens material	UV stabilized Polycarbonate
Light source	Light Emitting Diodes (LEDs)
Lens divergence (horizontal and vertical)	4° @ 50% (± 1°) of peak intensity 8° @ 10 % (± 2°) of peak intensity
Unit lifetime	Up to 10 years
Weight	1.5 kg with integrated flasher
Temperature range	-40°...+60°C
Supply Voltage	9 – 28 VDC
Power consumption	3 watts at full intensity



## Order Overview LS 100

### Option matrix

SmartSync GPS	GPS based synchronization installed in external box
For monitoring we recommend LHC.	

### Product codes

LS 100 STANDARD	LS 100 S with LEDFLASHER	Colour
LS 100W	LS 100WLF	white
LS 100R	LS 100RLF	red
LS 100G	LS 100GLF	green
LS 100Y	LS 100YLF	yellow