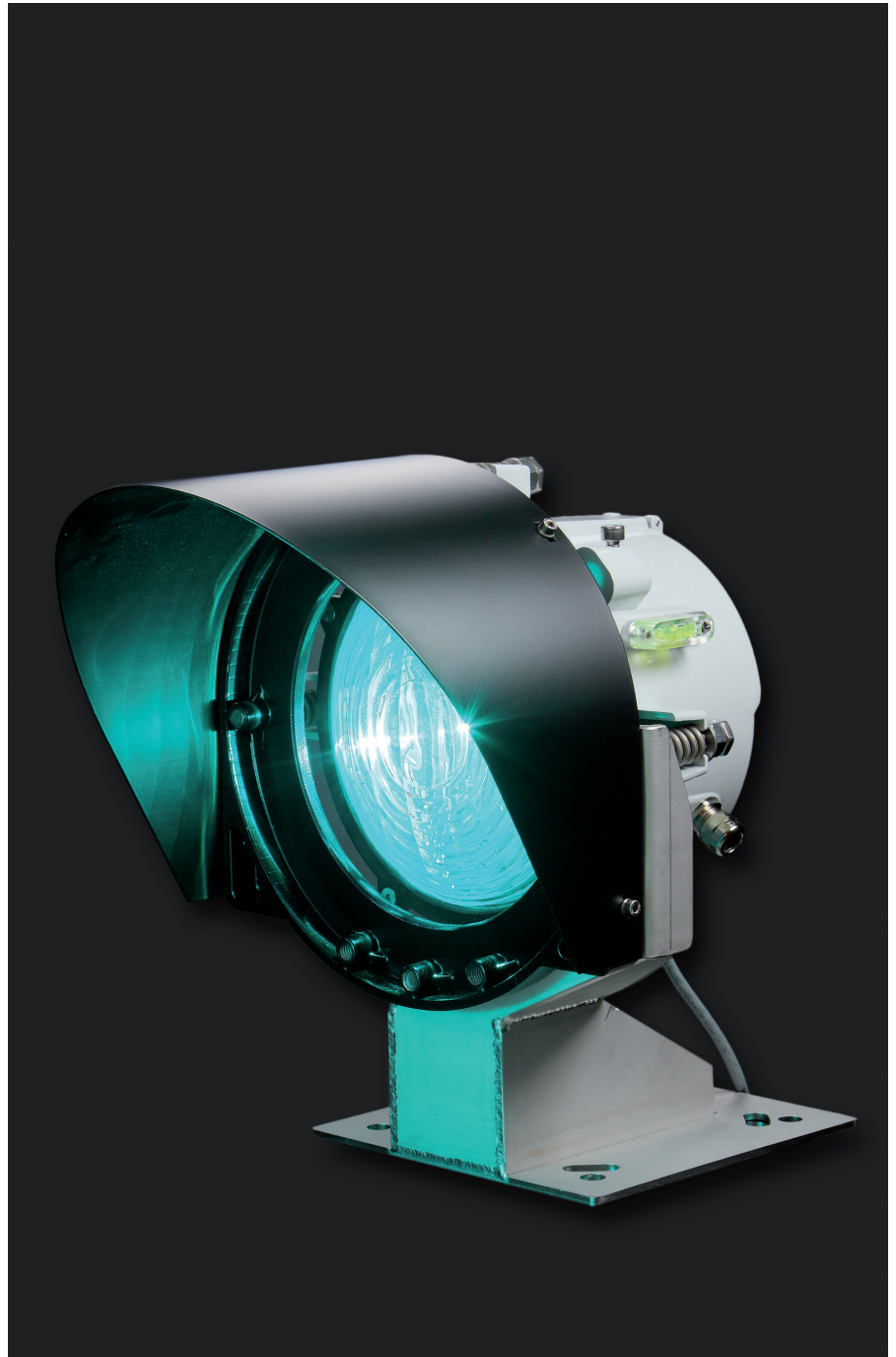


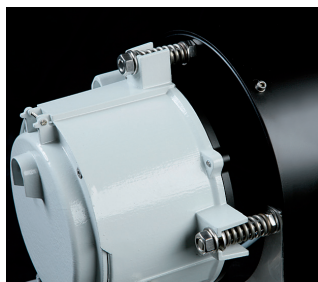
LO 200M

Medium/High Intensity LED Range Light

The LO 200M signal is designed for applications requiring medium and long range directional light, such as range lights and port entry signals.

- High intensity precision range light
- Equipped with a high intensity power LED and especially designed optics
- Robust aluminium IP 66 housing
- Visual range up to 14NM (Tc = 0,74)
- Standard IALA colours Red, Green, White and Yellow
- Extremely low power consumption, suitable for solar and battery operation
- Different optics available, as standard 8° @ 50% of top intensity
- Integrated flasher with 16 A solar panel charger
- Adjustable intensity and range
- Programming with any Sabik wireless programmer
- Optionally integrated GPS synchronization
- Optionally integrated GSM remote monitoring





Aluminium housing

The lantern enclosure is made from marine grade aluminium.



Sun shield

Protects lens from dust and bird droppings. Improves contrast in daytime use.



Installation

The lantern can easily be installed on any flat surface with four M10 size bolts.



PTFE breathing

Vent for pressure release in the back of the lantern.



Optics

Optics suitable for high intensity LED.



Sabik Easy Programmer

User friendly and compact wireless two-way programmer.



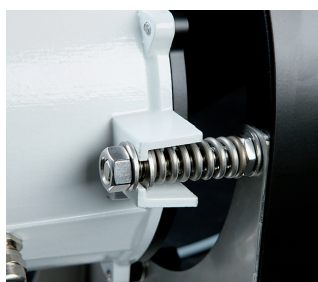
PDA Programmer

Wireless two-way communication using a Windows based PDA with infra red port. The Programmer can also retrieve the event log.



Level indicator

The integrated level indicator makes horizontal levelling easy.



Light beam adjustment

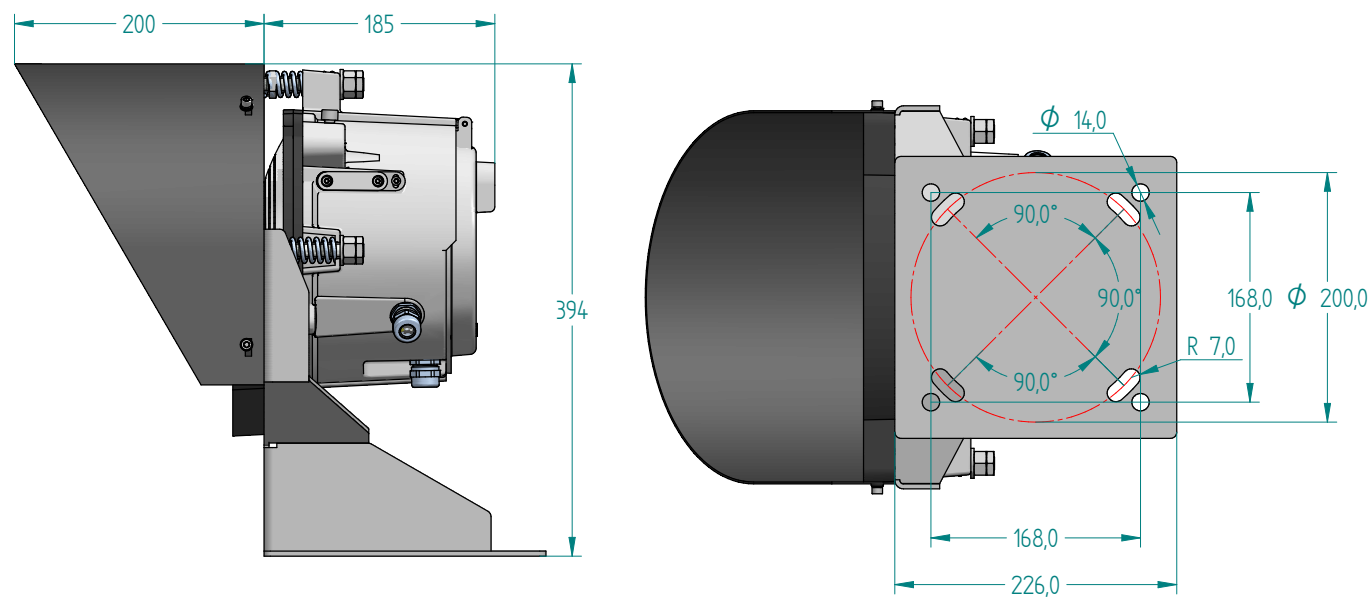
The direction of the light beam can be adjusted with 3 bolts. The 3 axis adjustment system enables both vertical and horizontal alignment.



Precision alignment

A gun sight can be utilized for precision alignment to the center line of the range.

Technical Specification LO 200M



Optical performance

Maximum fixed intensity				
At full power	7000 cd	7000cd	7000cd	13000cd

Main Technical Specification

Lens visual/Mechanical diameter	203 mm (8")
Lens material	UV stabilized Polycarbonate
Light source	Light Emitting Diodes (LEDs)
Lens horizontal divergence	8° @ 50 % (± 1°) of peak intensity
Unit lifetime	Up to 10 years
Weight	8 kg
Temperature range	-40°...+60°C
Supply Voltage	9 – 32 VDC
Power consumption	4W at full intensity
Degree of protection	IP 66

Order Overview LO 200M

Option matrix

OPT 1: Optical Feedback System	Integrated LED performance measurement
OPT 4: GPS sync	Integrated GPS sync including GPS antenna
OPT 7: External GPS	External GPS antenna for OPT 4 and OPT 9
OPT 9: LightGuard GSM + GPS	Integrated GSM based monitoring including GSM/GPS antennas
OPT 10: LightGuard GSM	Integrated GSM based monitoring including GSM antenna
OPT 11: Control card	Control card for secondary battery
OPT 12: Aux card with I/O	Aux card including I/O ports
OPT 13: Aux card with RS485 and I/O	Aux card including RS 485 and I/O port
Shock & Tilt Sensor	Integrated 3-axis G sensor for tilt and shock sensing

Product codes

Product	Colour
LO 200MW	white
LO 200MR	red
LO 200MG	green
LO 200MY	yellow

Product code example: LO 200MROPT4

- LO 200MR is Sabik code for LO 200M in red
- with a selection of option 4